



6 Willow Court Willow Road, Wallington, SM6 0PF

£1,150 Per month



1



1



1

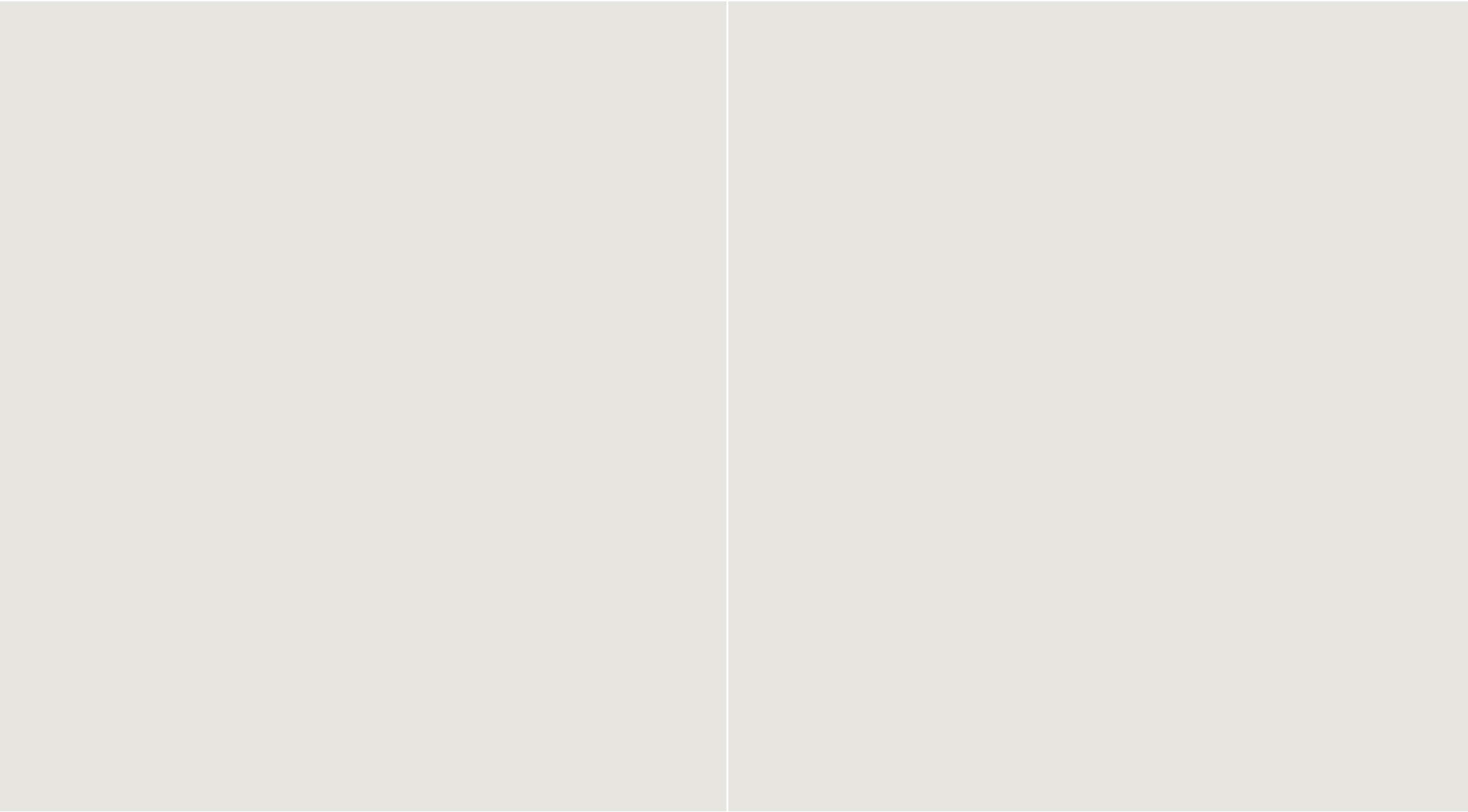
Cromwells
ESTATE AGENTS

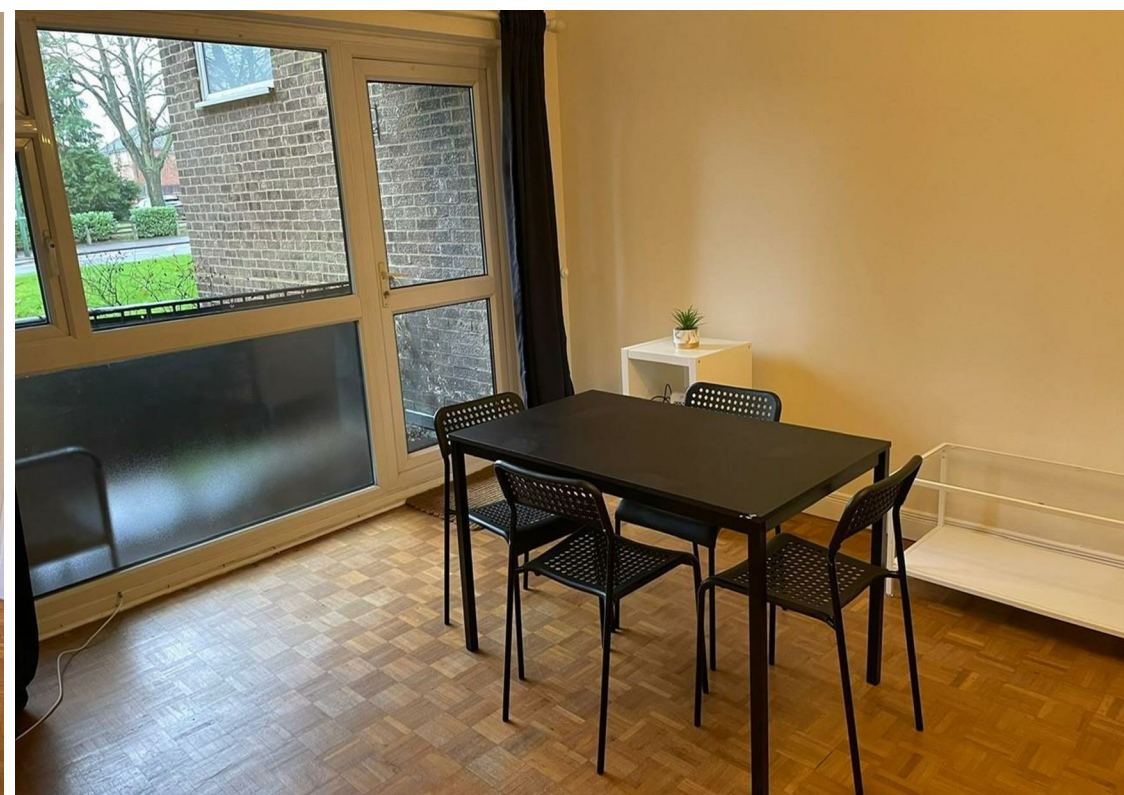


6 Willow Court Willow Road, Wallington, SM6 0PF

*** AVAILABLE IMMEDIATELY ***

A superbly presented completely re decorated one bed ground floor purpose built apartment situated in popular location a short walk from Wallington railway station, town centre and amenities. This home benefits from good size entrance hall to modern fitted kitchen, bathroom with shower over bath, double bedroom with built in wardrobes etc, good size lounge dining room with door to its own small terrace/balcony, ample storage, double glazing, electric heating, 'Parquet' flooring and off street parking. Available immediately £1150pcm fully furnished.







Floor Plan



Viewing

Please contact our Cromwells Office on 0208 647 4422 if you wish to arrange a viewing appointment for this property or require further information.

These particulars, whilst believed to be accurate are set out as a general outline only for guidance and do not constitute any part of an offer or contract. Intending purchasers should not rely on them as statements of representation of fact, but must satisfy themselves by inspection or otherwise as to their accuracy. No person in this firms employment has the authority to make or give any representation or warranty in respect of the property.

Area Map



Energy Efficiency Graph

